



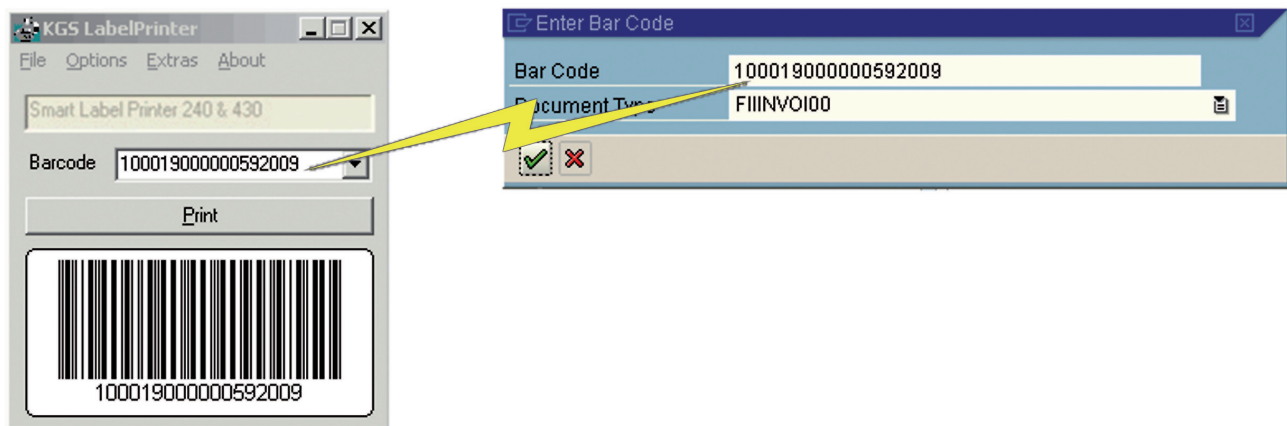
Document Integration for SAP®

LabelPrint

KGS LabelPrint is a solution to improve efficiency for document input. It works independently from the archiving system used.

KGS LabelPrint generates bar codes composed from SAP values like company code, document number and fiscal year. The label not only holds the barcode itself but also contains all values in a human readable format.

For an accounting clerk this is a huge improvement as all necessary account assignment information is being applied onto the document together with the bar code label.



KGS LabelPrint actively avoids mistakes. Every document obtains its unique and corresponding bar code, making it easy to track throughout the entire processing cycle. **KGS LabelPrint** is compatible with all SAP modules.

On <http://www.kgs-software.com> you will find current information about our products relating to document integration for SAP.

KGS Software GmbH & Co. KG
Am Goldberg 7, D-56581 Melsbach • Phone: +49 2642 97 54 02, +1 858 345 5517
+44 20 3286 1101, Fax: +49 26 33 47 10 35, sap@kgs-software.com



Document Integration for SAP®

LabelPrint



Product features:

- All common label printers are supported
- Printing on ordinary printers without bar code capability is possible
- Field selection option for bar code composition
- No manual entering of bar codes necessary while posting into SAP
- Roll out of client software is possible using a software distribution solution
- Fully compatible with SAP ArchiveLink™
- Features any SAP Release as of 4.6c
- Customizing and adjustments for certain modules and requirements possible

On <http://www.kgs-software.com> you will find current information about our products relating to document integration for SAP.

KGS Software GmbH & Co. KG
Am Goldberg 7, D-56581 Melsbach • Phone: +49 2642 97 54 02, +1 858 345 5517
+44 20 3286 1101, Fax: +49 26 33 47 10 35, sap@kgs-software.com